

Intensive deep cleaner Extra RM 752 ASF

Removal of care films

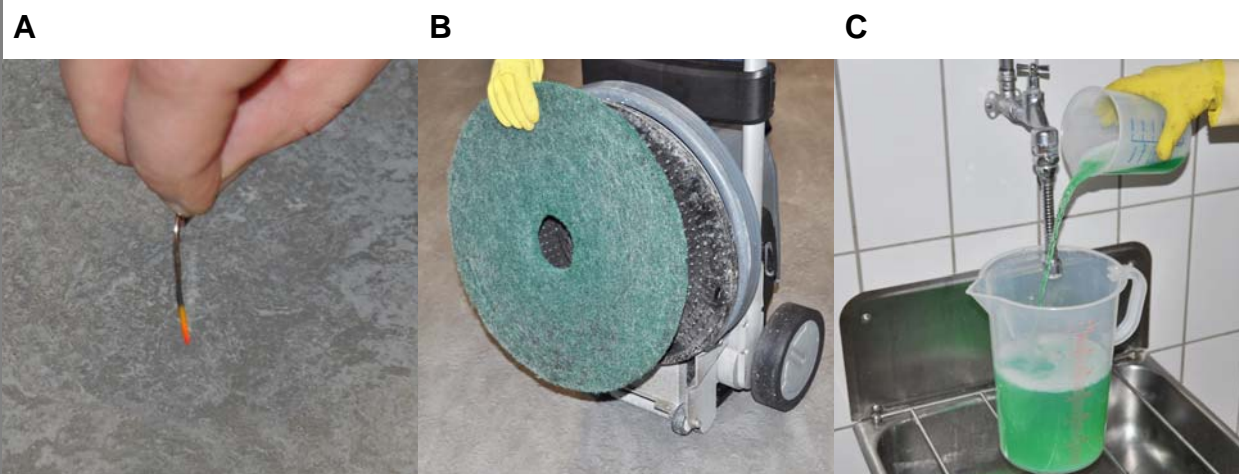


⚠ WARNING

These are only brief instructions! Please read the product information and observe the safety information on the product label prior to using the detergent. Follow the dosing instructions on the product label. The non-compliance with the safety information can cause damage to the object to be cleaned and risks for the environment, the user and other persons.

Preparation

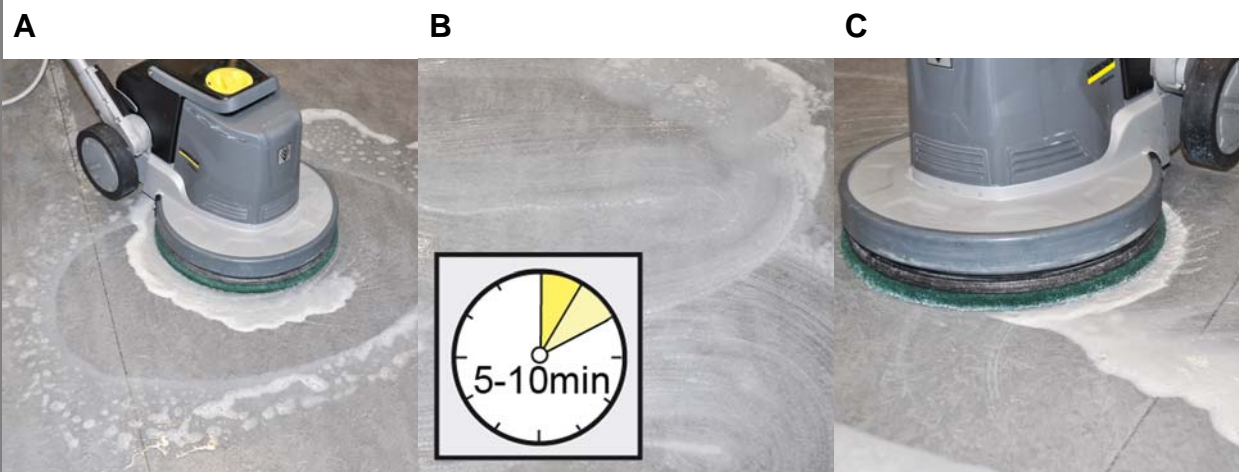
1



- A Determine coating (e.g. paper clip test). Use the intensive deep cleaner on coatings insensitive to alkali (e.g. PVC / PUR) only.
- B Select and prepare the machine and accessory that is suitable for the floor covering.
- C Dose the deep cleaner according to the thickness of the care film to be removed (approx. 20-30%, max. 50%).

Removing the care film

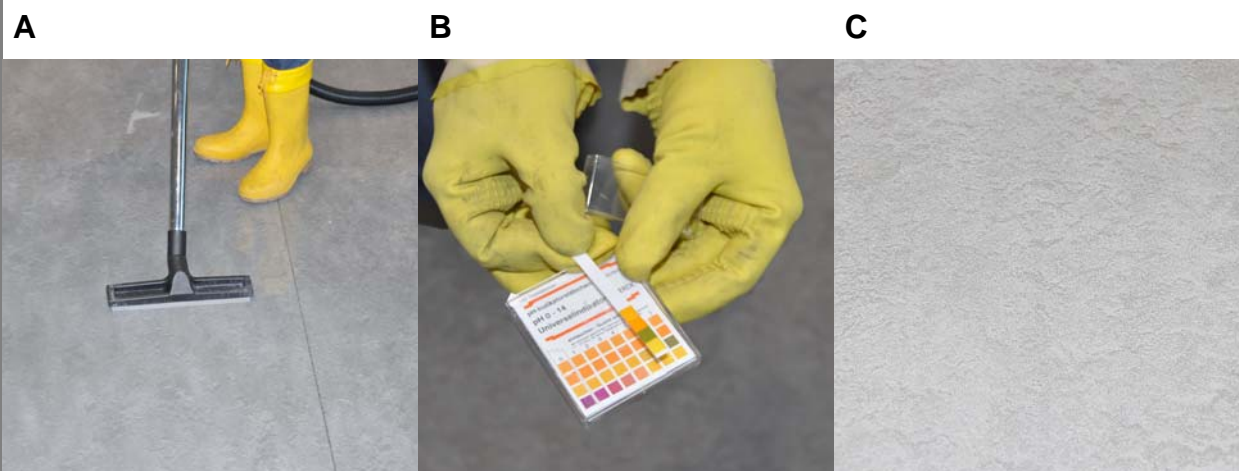
2



- A Apply deep cleaner solution, do not vacuum off.
- B Allow deep cleaner solution to react according to the thickness of the care film to be removed (approx. 5-10 minutes).
- C Mechanically treat the floor covering after the reaction time, then vacuum off the dirt.

Removing residues

3



- A Thoroughly post-clean the floor covering with clear water until all detergent and dirt residues are removed.
- B Check pH-value. Repeat the post-cleaning until a pH-value of 7-8.5 is reached.
- C Prior to a new coating, the floor covering must be dry and free of dust.

⚠ CAUTION

Risk of damage due to detergent! Carefully clean accessories, work materials and machines after working.

Intensive deep cleaner Extra RM 752 ASF

Removal of soiling



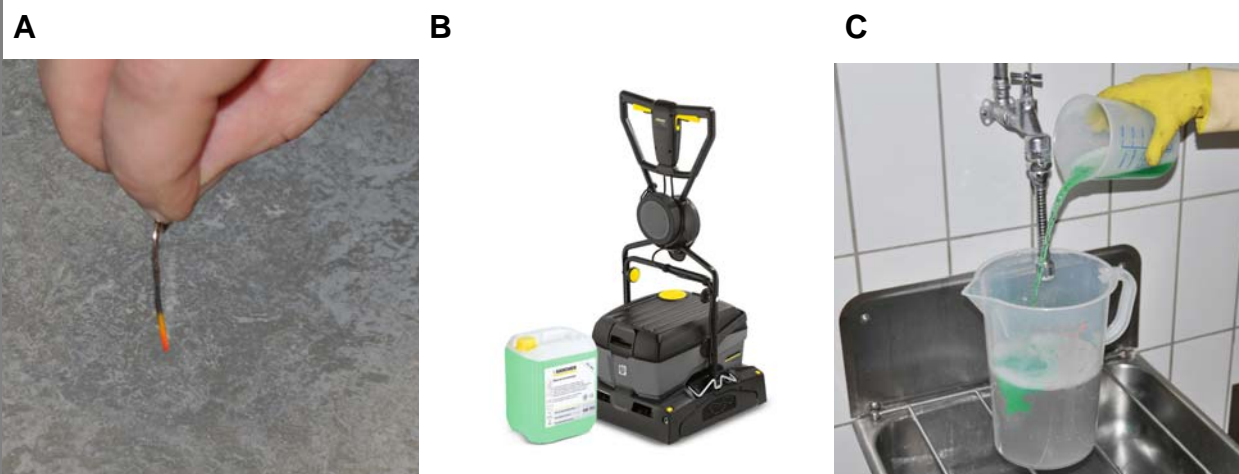
⚠ WARNING

These are only brief instructions! Please read the product information and observe the safety information on the product label prior to using the detergent. Follow the dosing instructions on the product label.

The non-compliance with the safety information can cause damage to the object to be cleaned and risks for the environment, the user and other persons.

Preparation

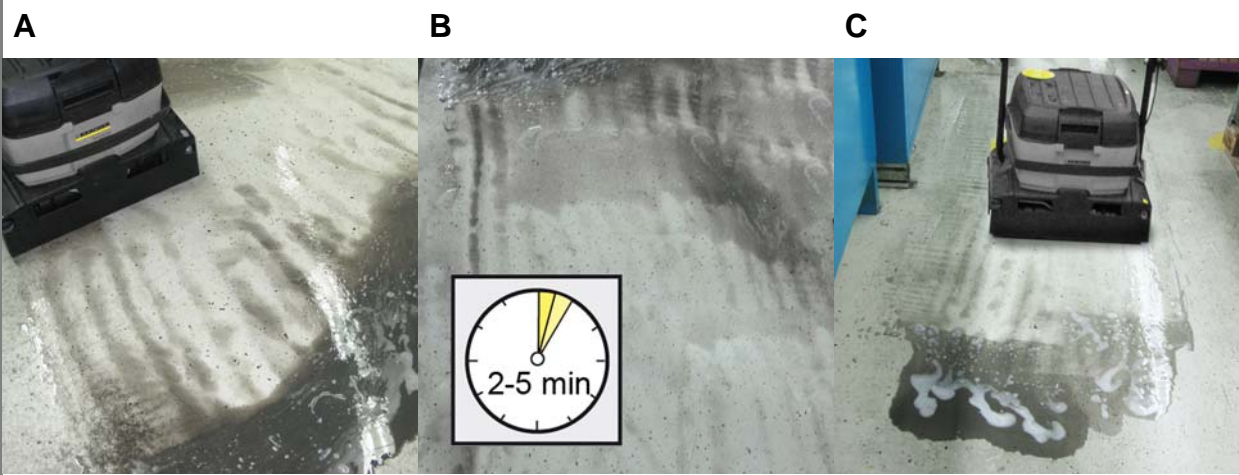
1



- A Determine coating (e.g. paper clip test). Use the intensive deep cleaner on coatings insensitive to alkali (e.g. PVC / PUR) only.
- B Select and prepare the machine and accessory that is suitable for the floor covering.
- C Dose the deep cleaner according to the level of the soiling to be removed (approx. 5-20%).

Deep cleaning

2



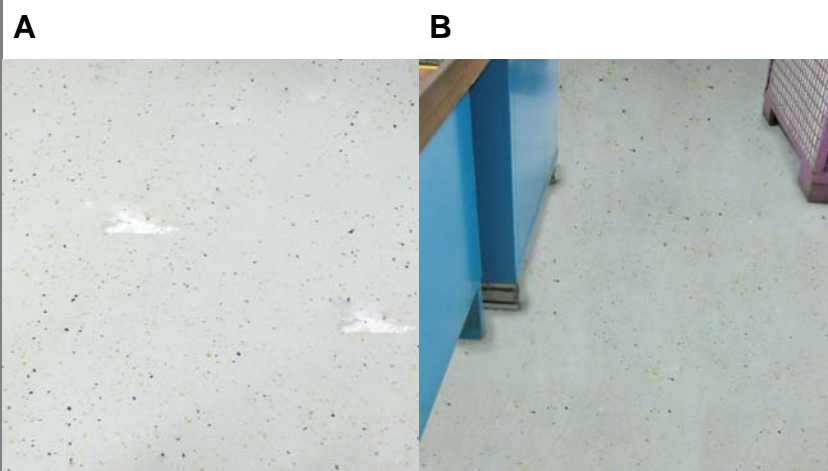
- A Apply deep cleaner solution, do not vacuum off.
- B Allow deep cleaner solution to react according to the level of soiling (approx. 2-5 minutes).
- C Clean floor covering with the cleaning machine. Vacuum off the dirt.

Note

In case of excessive dosage and/or a reaction time that is too long, there is a risk of the care film peeling off.

Removing residues

3



- A Thoroughly post-clean the floor covering with clear water until all detergent and dirt residues are removed.
- B Prior to a new coating, the floor covering must be dry and free of dust, the pH-value must be 7-8.5.

⚠ CAUTION

Risk of damage due to detergent! Carefully clean accessories, work materials and machines after working.